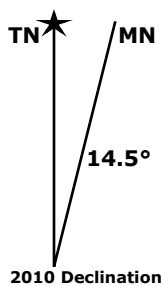


This map was created from a seamless mosaic of detailed USGS maps at topo.com

Refer to the pages indicated on the above index for detailed 7.5' series USGS maps. As with all maps, inaccuracies may exist and conditions may change. User assumes all risk associated with the use of this map.

© 2009 NGHT www.topo.com/quads/41119g1



USGS Revision Date: 1990
 Contour Interval on 7.5' Maps: 20 ft
Adjoining 7.5' Quads

NW	N	NE
W	*	E
SW	S	SE

- NW: Big Spring Butte, NV
- N: Thousand Creek S..., NV
- NE: Thousand Creek G..., NV
- W: Gooch Lake, NV
- * Virgin Valley, NV
- E: McGee Mountain, NV
- SW: Alkali Peak, NV
- S: Rock Spring Table, NV
- SE: Knott Creek Ranch, NV



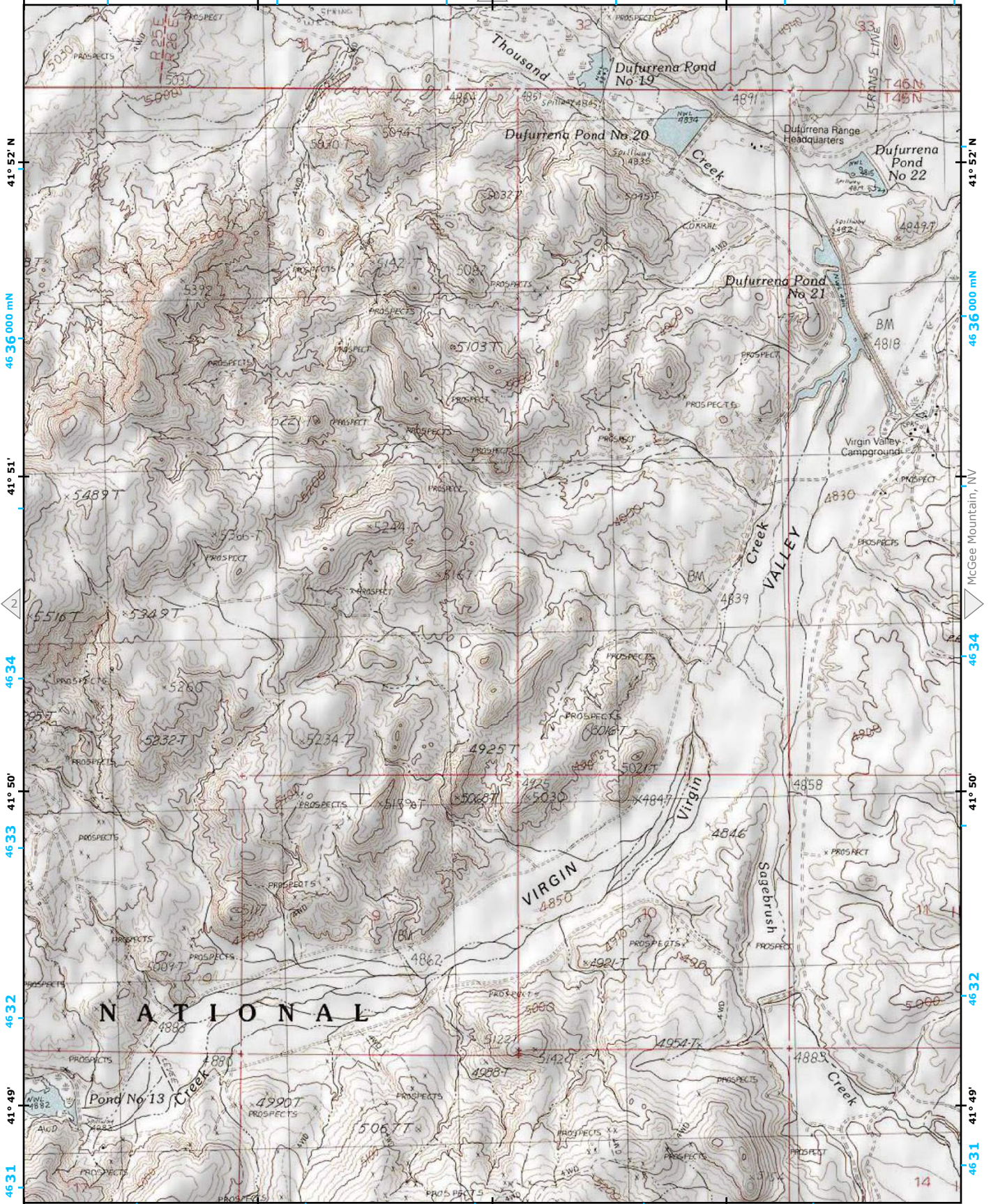
119° 3'

331

Thousand Creek Spring, NV

119° 1' W

333



41° 52' N

46 36 000 mN

41° 51'

46 34

41° 50'

46 32

41° 49'

46 31

41° 52' N

46 36 000 mN

41° 51'

46 34

41° 50'

46 32

41° 49'

46 31

329 119° 3' 330

332 119° 1' W 333 000 mE



