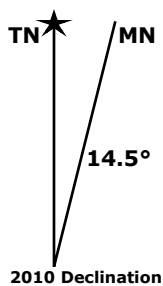


This map was created from a seamless mosaic of detailed USGS maps at topo.com

Refer to the pages indicated on the above index for detailed 7.5' series USGS maps. As with all maps, inaccuracies may exist and conditions may change. User assumes all risk associated with the use of this map.

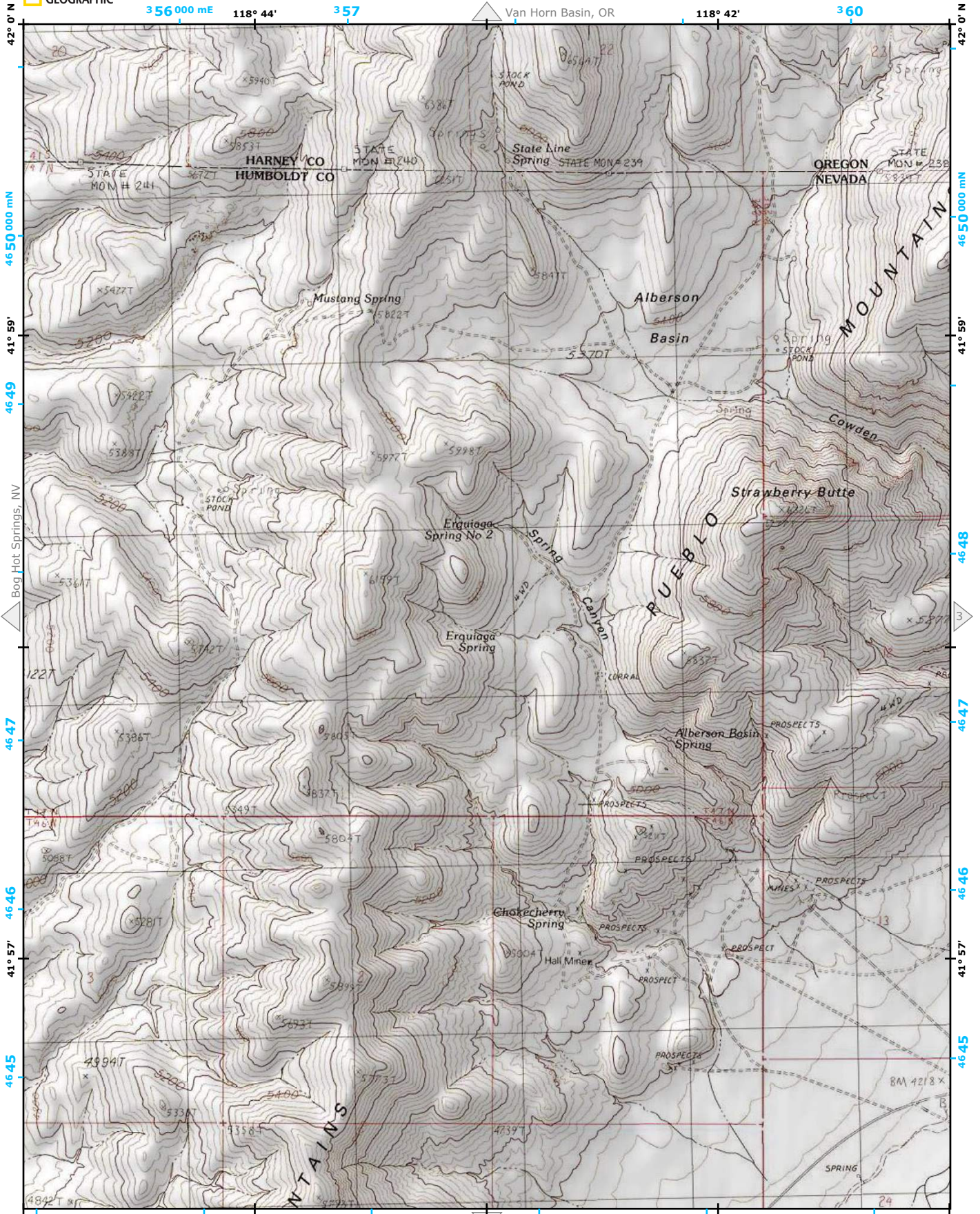
© 2009 NGHT www.topo.com/quads/41118h6



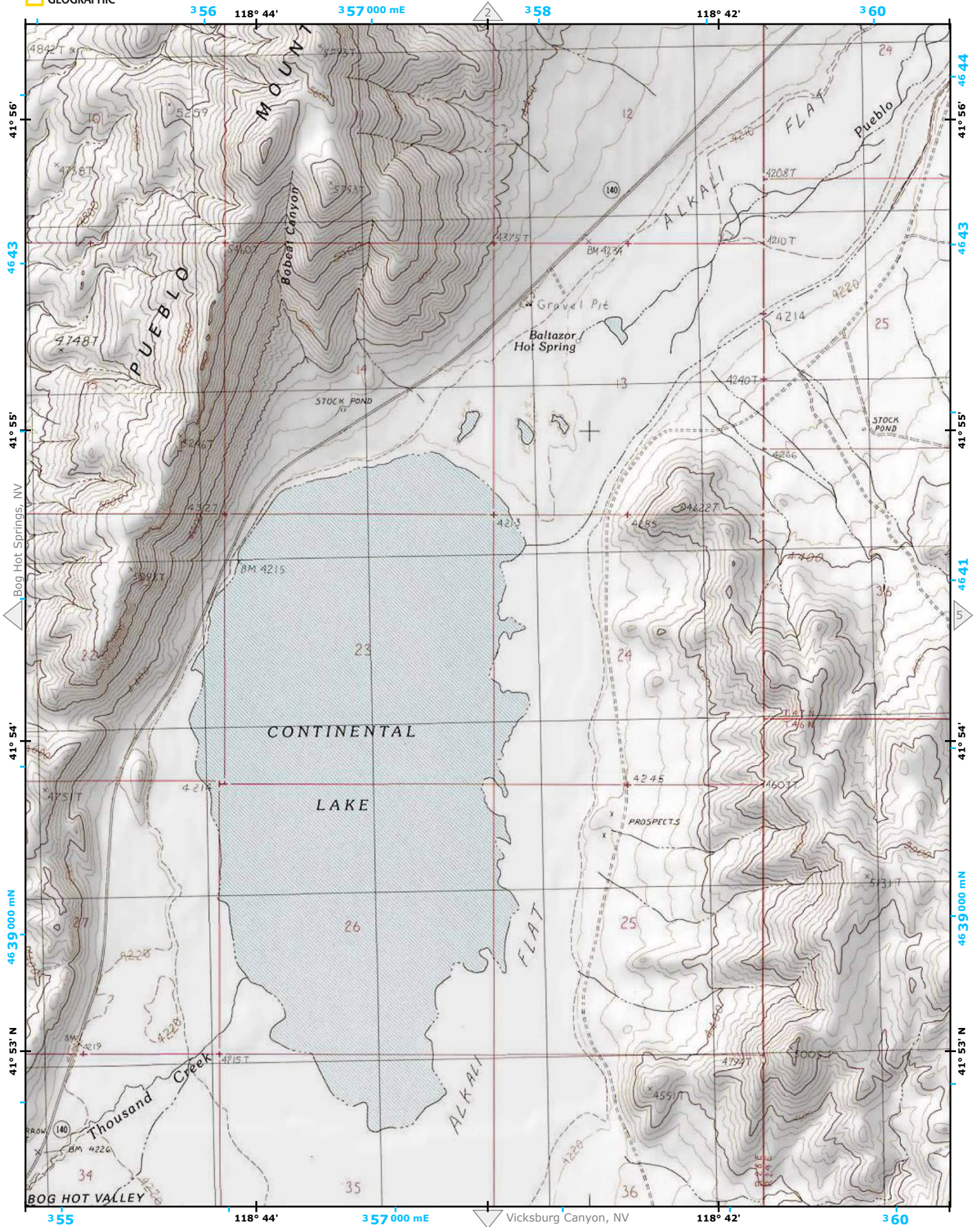
USGS Revision Date: 1990
 Contour Interval on 7.5' Maps: 40 ft
 Adjoining 7.5' Quads

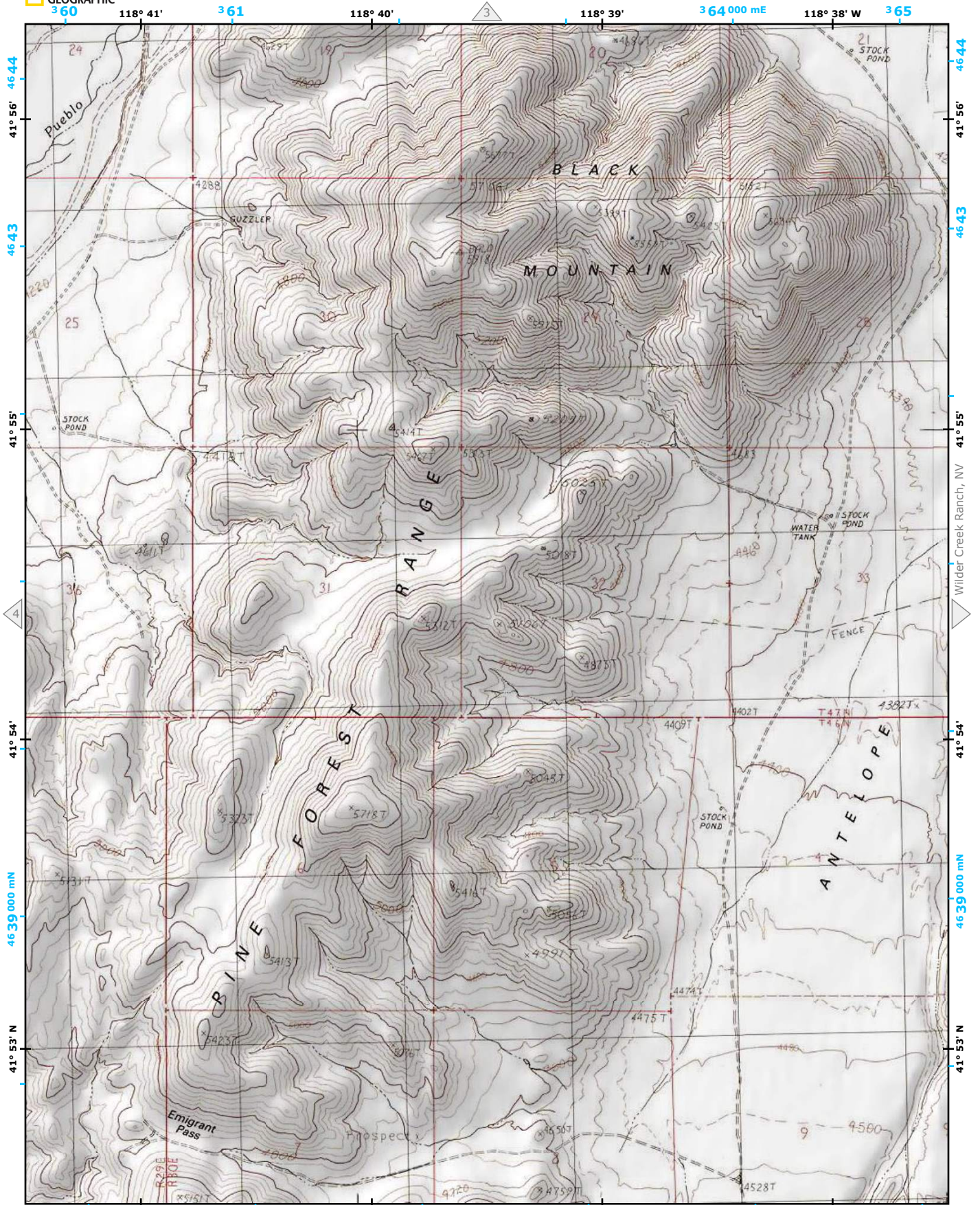
NW	N	NE
W	*	E
SW	S	SE

- NW: Oregon End Table, OR
- N: Van Horn Basin, OR
- NE: Colony Ranch, OR
- W: Bog Hot Springs, NV
- * Denio, NV
- E: Wilder Creek Ranch, NV
- SW: Alder Creek Ranch, NV
- S: Vicksburg Canyon, NV
- SE: Denio Summit, NV









0 0.5 1
MILES
0 1000 2000 4000 5000 10000
FEET
0 0.5 1
KILOMETERS
METERS

NAD83/WGS84 UTM Zone 11
© 2009 NGHT This map was created at topo.com. Please refer to index map on page 1 for more details. User assumes all risk associated with the use of this map.