

# DUSTY ROCKS

OCTOBER  
2010



**ROCK AND ARROWHEAD CLUB**

**P.O. BOX 1803**

**KLAMATH FALLS, OR 97601**

**[www.klamathrockclub.org](http://www.klamathrockclub.org)**

# DUSTY ROCKS

VOLUME 51 ISSUE 10

OCTOBER 2010 ~ Rock and Arrowhead Club ~ Klamath Falls Oregon

## OFFICERS & EXECUTIVE BOARD

**President:** Jeff Eastburn 541-331-7135  
302 W. Main St.  
Klamath Falls OR, 97601

**Vice Pres:** Marshall Curran 541-882-3933  
4708 Laverne Ave  
Klamath Falls OR, 97603

**Secretary:** Jennie Eastburn 541-331-7135  
302 W. Main St.  
Klamath Falls, OR 97601

**Treasurer:** Shelia James 541-281-9982  
17617 Hamaker Lane  
Klamath Falls, OR 97601

**NFMS Director:** Kathi Milem  
3333 Anderson #3  
Klamath Falls, OR 97603

**NFMS Junior Delegate:** Alyssa Carnes

**Past President:** Doris Newnham

**Member @ Large:** Marvin Stump

The club mailing address is:  
PO Box 1803, Klamath Falls OR 97601  
[www.klamathrockclub.org](http://www.klamathrockclub.org)

[charlie@klamathrockclub.org](mailto:charlie@klamathrockclub.org)

### Committee Chairs

Sunshine.....	Chris Chance
Program.....	Jeff Eastburn
Greeter/Door Prize.....	Holly Zumburn
Refreshment.....	Amanda Newnham
Historian.....	Heidi Eli
Librarian.....	Alyssa Carnes
Charity .....	John Long
Claims Rep.....	Garwin Carlson
Field Trips.....	Marshall Curran
Black Light Display .....	Chuck Newnham
Show Chair.....	Jennifer Zimmerlee
Asst Show Chair .....	Marvin Stump
Safety Officer.....	Jeff Eastburn
Publisher/ Webmaster.....	Charlie Wyckoff

Meetings are held at the Klamath County Museum Meeting Room – Main & Spring Streets, using the *West* entrance. **Meetings are held on the 2<sup>nd</sup> Monday of each month at 7:00 pm** with the exception of December when we have our Christmas Luncheon and Party.

### Visitors are cordially invited:

Dues are \$10.00 per year per adult (\$18 for couples), \$7.50 ages 16-18 and free for juniors ages 15 and under whose parents pay dues.

### General Objectives of the Club:

To promote popular interest, knowledge and understanding in the various earth sciences, as in Geology, Mineralogy, Paleontology and Lapidary and other related subjects. To sponsor and provide means of coordinating the work and efforts of all persons interested therein.

### Helping Others:

The club participates in the NFMS stamp program, saving large commemoratives, airmail, pre-canceled, foreign and "ordinary" stamps of all values. Proceeds from stamp sales will be used to benefit any charity deemed worthy by the NFMS Endowment Fund.

All contents Copyright © 2009-2010 All rights reserved. No part of this document or the related files may be reproduced or transmitted in any form, by any means without the prior permission of the Rock and Arrowhead Club. Permission is hereby given to non-Commercial and not-for profit groups or persons to copy, forward or otherwise share this publication for educational and informational purposes.

**THE NORTHWEST NEWSLETTER** is published 11 times a year. Copies are sent to each member's household. The cost is included in your annual dues.

Two free copies of the **AFMS NEWSLETTER** are mailed to each member club. Subscriptions are available at \$3.50 for 9 issues. Send payment to:  
American Federation of Mineralogical Societies  
PO Box 26523 Oklahoma City, Ok. 73126.

### We are affiliated with

- Northwest Federation of Mineralogical Societies
- American Federation of Mineralogical Societies
- Oregon Council of Rock & Mineral Clubs

### Newsletter Editor

Jennifer Zimmerlee  
541-545-6773  
[jlazys@hotmail.com](mailto:jlazys@hotmail.com)

Visit Us At [www.klamathrockclub.org](http://www.klamathrockclub.org)

Please e-mail [Charlie@klamathrockclub.org](mailto:Charlie@klamathrockclub.org) to get on our email list.



**From The Editor**

Well fall is here, and boy do I love it! I also love the fact that starting this month we are starting the steps to our 25th annual rock & gem show. How cool to be a part of it. Wouldn't you like to join us? If so come on down to the planning meeting, this will be my last year as chair so we need someone to step up in the future here is a perfect way to learn without all the stress! Also once again thanks for those who step up and contribute ideas, articles and pictures to our newsletter. Ours being the key, I enjoy your input and help and I think we make a more interesting newsletter. I tell you I missed the meeting last month as I hurt my back, boy did I miss it. I so enjoy our meetings, yes they are a little long and windy, but it's fun to hear everyone's opinions and adventures. Sometimes I wish they were earlier so I could be home earlier but after missing one I can't wait to be back this month...also thanks to Laura's great minutes I don't feel quite so lost. Please come join us, don't miss any of the fun! Happy Halloween everyone and happy rocking!

*Jennifer Zimmerlee*



**Inside this issue:**

Inside Cover ~ Club 1  
 Birthdays & greet- 2  
 August Minutes 3  
 August Minutes 4  
 The Rock Pile 5  
 Word Game 6  
 Museums 7  
 Field Trip 8  
 Emerald 9

**NEXT MEETING:**

- September 13th 7:00 pm
- Refreshments:  
Kathi Milem, Alyssa Carnes,  
Heidi Eli

\* Program:



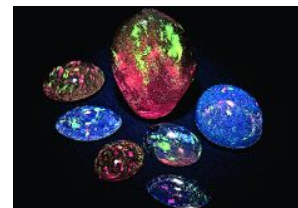
**HAPPY BIRTHDAY!**

- Jan Arnold - Murphy, OR
- Isaian Gerhardt - Bend, OR
- Rachel Hawkins - Klamath Falls, OR
- Joanne Johnston - Klamath Falls, OR
- Hope Piper - Klamath Falls, OR
- Almas Smith - Klamath Falls, OR
- Dick Taug - Fairview, OR



**October Birthstone Opal**

- \* Most opal is considered to be 50-65 million years old, dating back to the Cretaceous period.
- \* Formed as silica from decomposing rocks mixing with ground water that forms a silica gel collected and hardened in underground cavities and fissures.
- \* A gift of Opal is symbolic of faithfulness and confidence.
- \* Was said to ward off evil and protect the eyesight.





## September 13th, 2010 Meeting Minutes *Submitted by Laura Limb*

**Meeting called to order** by President Jeff Eastburn at 7:15 pm.

**Pledge of Allegiance** recited by all in attendance.

**Visitors:** Sandy Masterson, Shana Soto and Katie.

**Birthday** donations accepted.

**Door Prize** was won by Daniel Heiney (new member)

**Minutes:** Motion to approve and seconded. Minutes passed as written.

**Treasurer's report:** Sheila James has given her resignation as treasurer. If you are interested in this opportunity, please let Jeff know. This may become part of the elections in the next couple of months. Laura and Jeff will take care of the treasurer's duties until someone volunteers or is elected.

**Sunshine report:** Chris Chance needs a phone call or email of members that could use a pick me up. Both were printed in the last newsletter and Charlie will add them to the website. Jeff shared that Jetta Clark, wife of long time member Dale Clark recently passed away.

**Correspondence:** SWA Mineralogical Society in Longview, WA send a letter announcing their annual rock show on Sept 18-19 at the Castle Rock Fairgrounds. The club received a letter from the ACL Discovery Village in Salem Oregon asking if the club would like to sponsor a rock and gemology sponsorship. Discussion ensued amongst members and the group voted to consider donating \$25.00 to this non-profit organization.

**Grant funding:** Charlie Wyckoff shared that the grant funding is in question for this funding cycle. In the past, the club received \$6000 and had a matching portion for the grant dollars. This money primarily assisted in the promotion and marketing of the annual rock show. Group discussion on how to raise, advertised, etc for the show in March 2011. Decision was to have the show committee and various committees meet to discuss.

**Library:** Chris brought returned the black light and some rocks for members to see. If you are interested in checking out the black light, Alyssa will be able to help you.

**Historian's report:** Kathy reported on behalf of Heidi. Received pictures via email from Marvin and Leah Stump on the Opal trip to Virgin Valley. Jeff also has pictures to share.

**NWF Report:** Kathy and Alyssa will be traveling this coming weekend to the meeting. She will need any postage stamps prior to leaving.

**Charity Report:** Chris Chance asked if the club could assist the Lakeview Tallman Rock Chippers Club. The rock show was small this year and not very many volunteers to help. They appreciated the use of the table. One request was for a "Menu" of the table offerings. John Long will add them to the list for donations. Jeff will get with John for the AC Gilbert request as well.

### Old Business:

1. **Trailer:** No new news on the title. Chuck Newnham will call and check on status. Discuss on the desire to continue with the purchase of the trailer considering the decrease in grant funding money by the group. Group still feels that this is a necessary option. However, caution was expressed in the light of an economic downturn and the fact that we may not see the profit we have historically.

2. **Museum display:** No word from the museum Director on next steps. Chuck will be in contact with Todd. Marshall has the requested Thunder Egg information available and is need of who to send or give it to. *Continued on next page*



**New Business:**

1. **Theme for the 2011 rock show is “Petrified Wood”.** This will be submitted to the federation with the dates of March 12 and 13, 2011. Due to decrease in marketing funding the notices that are printed in magazines such as Rock and Gem, Oregon Travel, etc will be smaller than previous years. Chuck suggested that we keep our advertising focus to the Northern California and Oregon areas. The cost in the past has been \$1000.00 full page and \$500.00 half page usually in the Jan and Feb Rock and Gem magazine. John Long suggested keeping and/or developing a list of folks to send invitations to in the future. Email would be preferred.
2. **Making Swag:** Jeff checked into the equipment. It is still manufactured and you can still get supplies for this model. A refurbished unit sells for \$650.00. Discussion ensued on is this the best way to promote the club. Club members in the group have had shirts, hats, etc made up and gave good examples of product not selling. Is this a cost effective investment for the group? Suggestions made to have a few items, bags, shirts, hats, etc made up for the show and see how well they sell. Kathy shared the suggestion that people could order the shirts at the show that way the club would not have a large amount of money into it and only the one’s who put a deposit or paid in full would have a shirt. Etc. Thus decreasing storage, cost, etc. Chris Chance offered to bring to the next meeting the stats on the Garden Clubs recent show to help us get a feel for the cost, etc. Charlie shared that printing quality bags for \$4-6 apiece and have 20-22 oz canvass for a quality. The group decided to not purchase the printing equipment and go with different options. This will be discussed at the show committee meetings.
3. **Estate Sale:** Dave’s estate in Rocky Point is selling rocks. Contact Jim at 541-476-6553 to arrange for a site visit.
4. **Maps:** Charlie continues to work on the maps. If you are in need of a map for a certain area in Oregon, Northern California, Idaho and Nevada, please contact him.
5. **Fair entries:** John Long shared that the show of rocks entered into the TuleLake Fair was minimal and encouraged all members to add an entry into any fair to promote rock hounding. Various members have entered items in fairs that can assist you in the process. Chuck will report at the October meeting the process of entering an item in the fair.
6. **Sale:** Ed from the Gold Panners group will get with Jennifer to add to the newsletter grinders and rock saws that are for sale.
7. **Membership Dues:** Dues are due to the club from Sept 1 thru Dec 15. You can mail or hand deliver the dues at the next couple of meetings.
8. **Elections:** Nominations will happen in the October meeting.
9. **November meeting:** Marvin and Leah Stump will demonstrate how to make rock critters and gem trees. This is a hands on presentation so come prepared to be creative.

**2011 Rock Show:** Marvin, on behalf of Jennifer who is unable to be at this meeting, reminded club members that the show meetings will begin in October with the majority of the work to be done by the first of January. Volunteers are needed to help in putting on this event. The first show meeting is **Oct 14<sup>th</sup> at 6 pm at the IYS building located at 10<sup>th</sup> and Main St.** LeRoy Biddle and Larry Phillips are willing to volunteer at the show.

**Field Trips:**

Doris Newnham: Found a piece of jasperized green petrified wood that weighed approximately 1500 lbs. Her smile in relating the retrieval of this rock says it all.

John Long: Rutilated quartz clock face for display.

Chuck Newnham: found a piece of petrified wood that is 6 ½ feet tall and he is still digging. He also shared that the rule is one piece plus 250 lbs per year of petrified wood. He also shared a string on faceted, roundel opal beads that he recently finished.

*Continued on next page*



October 2010

Our website won 6th place in the 2010 Website contest by the NFMS! Great Job Charlie!



# The Rock Pile

Elections are next month, please come to the October meeting for nominations and the November meeting to:



**Dues are Due!**  
**Don't forget to send in your Dues!**



Sunshine Report:

Please remember Dale Clark in your thoughts and prayers, his wife Jetta recently passed away.

Show Planning Committee Meeting

October 14, 6:00pm IYS building

Corner of 10th and Main,

Come one, Come all!

(Thanks Kathi for the use of the building again this year, we appreciate)



### Lets Travel to a Show!

October 9-10	Grass Valley, CA
October 9-10	Marysville, WA
October 15-17	Springfield, OR
October 16-17	Lewiston, ID
October 16-17	Placerville, CA
October 16-17	Santa Rosa, CA
October 23-24	Bellevue, WA
October 23-24	Canby, OR
November 5-7	Eureka, CA

### Minutes Continued.....

Marshall Curran: no new news on the Jacksonville field trip as of yet.

Virgin Valley: Marvin reported out on the Virgin Valley trip. 9 people were able to attend. It was HOT. Marvin found a sequoia cone at the dig. When the cone is wet, it is translucent. Fire opal was dug as well and examples passed to the group to view. Dates for next year possibly are the 3<sup>rd</sup> weekend in August and Marvin will try to coordinate with John Church to visit his claims as well. Great fun had by those attending.

### **Suggestions:**

New members asked if a glossary of terms and abbreviations could be put together so they could become familiar with the "rock" terminology. Group agreed that would be a good educational opportunity.

**Program:** Silent auction with multiple choices and a full table of items to bid on. Total \$ 143.00. Thank you to all who participated.

**Meeting adjourned at 9:15 pm**



**At long last... a rock hounding trip!**



We were looking through the booklet, "Gem Trails of Oregon" to see if we could find something close to home to go hunting for. We read about Crane Creek – just south of Lakeview... and the booklet said it was a source of thundereggs! Oh boy!

Sunday morning we packed up the dogs and a picnic lunch and headed out, following the instructions in the book. Since that booklet had been printed almost 12 years ago, some markings had changed, but it was pretty accurate in its mileage/odometer readings.

Crane Creek is only about 3 ½ miles south of Lakeview. We turned up that dirt road and then counted off another 3 miles on the odometer and came to a road with a ranch sign on it. We almost didn't take it, but decided to give it a try and it turned out to be the correct road. During the wet season, the road had been mushed up a bit, but since it had dried out, the ruts were pretty passable. There was one section that was pretty narrow for our pickup, but again, we were able to continue on. We decided to park the pickup and walk the last 1.5 miles – up the hill – and it was quite a hike. When we got to the top, we couldn't remember if we were supposed to go left or right... but we finally found the area. There were quite a few pits where other rock hounds had dug for thundereggs.



Since this was our first trip up there and we weren't sure how far we had to go, we had left the shovel and Pulaski in the pickup (a mile and a half down the road). We weren't able to do much digging because of that, but there were quite a few thundereggs left around the pits. Some were broken up and some were whole. We were able to fill our bags with a good selection and then turned around and headed down the hill back to the pickup.



Robert cut a couple of the smaller eggs when we got home – both have nice agate centers!

We're already making plans for the next outing.

Linda & Robert Gresham September 26, 2010



**Upcoming!**

**Next month short meeting so we can learn to make Gem Trees & rock critters!**

**Start shopping for your gifts for our annual Christmas Party! Details next month!**





**Part I Glossary of Terms (these are technical, would love some suggestions for less technical ones!)**

**Abrasive** - Hard, tough material used to smooth out rough surfaces; a common abrasive is sandpaper.

**Absolute hardness** - Scale for measuring the hardness of a mineral. The Mohs scale also measures hardness, except the absolute hardness scale has its numbers in proportion.

Only scientists use the absolute hardness scale; mineral collectors measure hardness using the Mohs scale.

**Absorption spectrum** - The specific bands of light that pass through and those that get absorbed in a gem or mineral and disperse into the colors of the spectrum. Different gems have different absorption spectra, meaning they are all unique in regard to which colors are absorbed and which pass through, this plays a major role in identifying gems, and can easily distinguish between an imitation gem that has properties almost identical to the real thing. A spectroscope is used to determine the absorption spectra of a mineral.

**Acicular** - An aggregate of long, slender, crystals, this term is also used to describe the crystal habit of single long, thin, slender crystals.

**Acid test** - Procedure performed to help identify a mineral. Certain acids (usually hydrochloric acid and nitric acid) are placed in contact with the mineral or its powder, and, depending on the mineral, it dissolves, effervesces, or remains inactive.

**Activator** - Particle in a fluorescent substance that causes the substance to glow when exposed to ultraviolet light.

**Adularescence** - An effect seen on certain minerals which causes it to display a billowy, rounded, ghost-like reflection with a bluish-whitish color emanating from the surface when the mineral is cut into a cabochon. It is caused by structural anomalies or build up of water in the mineral. Opals and Moonstones are some of the most famous for exhibiting adularescence, and the name is derived from Adularia, of which Moonstone is a variety of.

**Alluvial** - Said of eroded material that gets transported by rivers or streams. (Deposit - in a stream or river where alluvial materials get placed).

**Amygdule** - A small, bubble-like mass formed from volcanic igneous rock that solidified and a bubble of gas got trapped in the interior.

**Aqueous** - Formed from precipitating hard water. Stalagmites and stalactites are common examples.

**Asterism** - Effect exhibited on some minerals (usually only in polished cabochons) causing it to reflect a billowy, star-like formation of concentrated light which moves around when the mineral is rotated. Asterism is caused by dense inclusions of tiny, parallel, slender, fibers in the mineral which cause the light to reflect in such an interesting manner. Minerals that display asterism may exhibit four, six, and sometimes twelve rayed "stars", depending on the inclusions, size, and facet mode. Some specimens may display much stronger asterism than others, and some specimens may have areas where the inclusions are not present, leaving holes or empty areas in the star.

**Auriferous** - Containing gold.

**Autochthonous** - Describing a rock or mineral that formed in the same location where it was found.

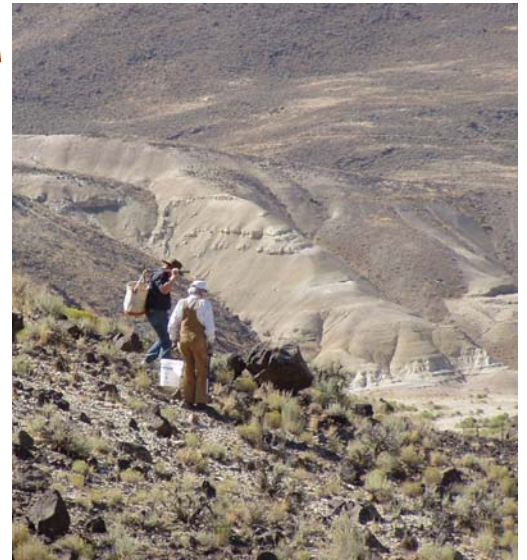
**Aventurescence** - The effect caused by small inclusions of a mineral with a highly reflective surface (commonly **Hematite**, **Pyrite**, or **Goethite**) which causes it to exhibit a glistening effect, as if it is pasted with glitter, when rotated or looked at different points. The name is derived from **Aventurine**, a green variety of **Quartz** that exhibits this effect.





# Field Trip, Virgin Valley Part II

More pictures from the fun trip for Opals from Leah and Marvin Stump, Thank You!



Don & Kermit



A Couple of Stumps (Marvin)



Don Perryman



Fairisine Fore



Campground



Toilet way way down there!



Talking it Over



Kermit