

DUSTY ROCKS

JANUARY
2010



ROCK AND ARROWHEAD CLUB

P.O. BOX 1803

KLAMATH FALLS, OR 97601

www.klamathrockclub.org

~ DUSTY ROCKS ~

VOLUME 51 ISSUE 1

JANUARY 2010 ~ Rock and Arrowhead Club ~ Klamath Falls Oregon

OFFICERS & EXECUTIVE BOARD

President: Jeff Eastburn 541-331-7135
302 W. Main St.
Klamath Falls OR, 97601

Vice Pres: Marshall Curran 541-882-3933
4708 Laverne Ave
Klamath Falls OR, 97603

Secretary: Jenny Eastburn 541-331-7135
302 W. Main St.
Klamath Falls, OR 97601

Treasurer: Jodean Cogdill 541-884-7431
2349 Wantland Ave.
Klamath Falls, OR 97603

NFMS Director: Kathi Milem
3333 Anderson #3
Klamath Falls, OR 97603

NFMS Junior Delegate: Alyssa Carnes

Past President: Doris Newham

Member @ Large: Marvin Stump

The club mailing address is:
PO Box 1803, Klamath Falls OR 97601
www.klamathrockclub.org
charlie@klamathrockclub.org

Meetings are held at the Klamath County Museum Meeting Room – Main & Spring Streets, using the *West* entrance. **Meetings are held on the 2nd Monday of each month at 7:00 pm** with the exception of December when we have our Christmas Luncheon and Party.

Visitors are cordially invited:

Dues are \$10.00 per year per adult (\$18 for couples), \$7.50 ages 16-18 and free for juniors ages 15 and under whose parents pay dues. They are paid for the year beginning September 1st and ending August 30th. You are delinquent as of October 1st and are given a 60 day grace period. After December 31st your name will be removed from the mailing list.

General Objectives of the Club:

To promote popular interest, knowledge and understanding in the various earth sciences, as in Geology, Mineralogy, Paleontology and Lapidary and other related subjects. To sponsor and provide means of coordinating the work and efforts of all persons interested therein.

Helping Others:

The club participates in the NFMS stamp program, saving large commemoratives, airmail, pre-canceled, foreign and "ordinary" stamps of all values. Proceeds from stamp sales will be used to benefit any charity deemed worthy by the NFMS Endowment Fund. We also collect pop lid tabs which will be sold with the proceeds going to support and purchase dialysis equipment.

Committee Chairs

↔
Sunshine.....Chris Chance
Program.....Jeff Eastburn
Greeter/Door Prize.....Alyssa Carnes
Refreshment.....Amanda Newnham
Historian.....Kathi Milem
Librarian.....Alyssa Carnes
Claims Rep.....Garwin Carlson
Field Trips.....Jeff Eastburn
Show Chair.....Jennifer Zimmerlee
Asst Show ChairMarvin Stump
Safety Officer..... Jeff Eastburn
Publisher/ Webmaster....Charlie Wyckoff

THE NORTHWEST NEWSLETTER is published 11 times a year (not published in December). Copies are sent to each member's household. The cost is included in your annual dues.

Two free copies of the **AFMS NEWSLETTER** are mailed to each member club. Subscriptions are available at \$3.50 for 9 issues (not published in July or August and the December/January issues are combined).

Send payment to:

American Federation of Mineralogical Societies
PO Box 26523 Oklahoma City, Ok. 73126.

We are affiliated with

- Northwest Federation of Mineralogical Societies
- American Federation of Mineralogical Societies
- Oregon Council of Rock & Mineral Clubs

Newsletter Editor

Jennifer Zimmerlee
541-545-6773
jlazys@hotmail.com

January 2010

November 9th, 2009 Meeting Minutes

<p>Inside this issue:</p> <p>Inside Cover ~ Club 1</p> <p>November Minutes 2</p> <p>Messages 3</p> <p>2010 Show 4</p> <p>News & Notes 5</p> <p>Getting To Know You 6</p> <p>? Of the Month 7</p> <p>Calendar 8</p> <p>Christmas Luncheon 9</p> <p>Show Case Application 10</p>	<p>Doris Newnham called meeting to order tonight</p> <p>And club said the pledge of allegiance.</p> <p>Guests were Brittney Legget Welcome.</p> <p>Door Prize - Roseanne Long won a piece of petrified wood donated by the club congrats.</p> <p>Birthday contributions – Everyone paid that needed to.</p> <p>Treasurers report – stand as read</p> <p>Club correspondence – nothing to report</p> <p>Minutes stand as printed.</p> <p>Sunshine Report – sent a card to Ken Newnham, Sam Chance just had surgery but will be ok. Ken is in good spirits and Robert Eli is doing well.</p> <p>Liberians report – the books are not out tonight.</p> <p>Historians report – Please take plenty of pictures at our upcoming events for Kathi.</p> <p>NWF report – Nothing to report that is too important now.</p> <p>Other reports – Jeff Eastburn talked about club bi laws and you can get them on request only.</p> <p>Old Business – talked about the grant money</p>
---	--

Nov. 17th at 6pm at 10th and Main St. at the IYS building. Please all can attend. Elections are held tonight.

New Business – nominations were made and the following have been elected:

NEXT MEETING:

President Jeff Eastburn, Vice President Marshall Curran, Treasurer is Jodean Cogdill till further notice.

• January 11

Jennifer Zimmerlee has been appointed Show Chairman & newsletter editor. We still need a charity for the charity table at the rock show in March 2010.

• Refreshments:

We discussed a committee to select a charity for the 2010 show. Suggestions have been made but not formally set.

Garwin Carlson has invited new members to come to his home on Carlson Dr. in Moyina heights up off of Patterson st. and Alva on Nov. 14th 2009 from 1pm to 4:30pm please go if you can he is a great wealth of information.

Christmas luncheon is on December 13th 2009 Sunday from 1pm to 4pm here at the Klamath museum. Make sure you bring a gag gift for a man or a woman and a regular gift for a man or a woman. The gag gift should be rock related. Make sure your gift is at \$10.00 or below \$10.00

Field trips – Chuck Newnham had someone from Texas come up to his claim from Jasper Texas. He will be here for our show Chuck said.

Garwin said we need more tumbled rock for our show in March so get with Garwin or Marvin if you have any to donate. Jeff Eastburn came home from Boise Idaho and did some rock hounding and picked up some sand too.

Alyssa Carnes has a big chunk of petrified wood and she brought it tonight to share with everyone. Great boulder!!!!!! Doris went on a field trip to Springfield show and she bought something that has fossilized stuff in the piece. Jeff Eastburn went up out of McCall Idaho for some sapphire and it was a little flake but it was cool.

Tonight's refreshments are by Marvin and Leah Stump thank you.

Next months refreshments are provided by the club Thank you and have a very Merry Christmas and a Happy New Year too.

List for the Christmas party dinner:

Turkey and dressing – Garwin Carlson

Fruits and veggies – Marshall Curran

Desert something pumpkin and cranberry sauce. Charlie Wycroff and Doreen Chase

Coleslaw and ham – Chris and Sam Chance

Buns and butter and a salad – Robert and Heidi Eli.

Cookies and Cake – Steve and Lily Kurusz

Veggies – Don Perryman

Dessert salad – Jennifer Zimmerlee

Fruit salad – Kathi Milem and Alyssa Carnes

Baked beans – Jodean Cogdill

Whipped potato and punch – Jeff and Jennie Eastburn

Meeting was adjourned and refreshments served and program was presented by a movie DVD. Thank you to all who served and who are now serving in our club. You do a great job. The club gave a round of applause to Doris Newnham for her many years as club president. Thank you.





From The President:

I'm happy to start my 2010 as RAC president. Doris was such a great leader I know I'll have to step up my game in order to follow in her footsteps. We have some exciting things coming up including our main show in March and the smaller one day show in April. I know things can get busy but please come out and participate in these shows and help make them a big success. Our club is made up of people who come together for a love of rocks and gems but then become friends and our member's success is our success. See you at a meeting, show or field trip.

Thanks

Jeff



From The Editor

We are starting a new year, and new year means a time for change. For my part that change come in this newsletter where I'm still trying out new features. This month we are featuring our officers of the club. Also trying our question of the month again. Another idea is our discussion area, often time we discuss things at the meetings that are too lengthy to go into in the minutes, for those who can't make the meetings or for those who need time to digest the information, this section will allow for a more in-depth look at what is happening. Please feel free to call or email me at jlazys@hotmail.com or 541-545-6773 should you have any questions or input. I enjoyed hearing from Grace Hurst and Owen Downhill, two of our members who live out of town and cannot join in, but look at the newsletter as their main source of information. I hope to help them and other members feel as they are also an active member of the club.

The Club is also now in full show planning mode, which means we need your help please! Clear off your calendars for March 5th-7th and plan on coming down to join in the fun. I'm looking forward to a Great New Year and wish everyone the same!

Jennifer Zimmerlee



January 2010

The Many Surprises of March 6th & 7th, 2010 Thundereggs & Geodes

You're Invited!

Next Show Meeting:

IYS Building Corner of Main
Street & 10th Street

6:00 P.M.

January 14th, 2010

Making Case Favors

January 16th, in the afternoon
at Garwin's

(please call to confirm time @882-8276)

We Want You!

- ◆ We still need about 50 Geode Slabs for Case Favors
- ◆ We need people to display cases (see attached form)
- ◆ We still need tumbled rock for our "Critters" for the kid's table.
- ◆ We need volunteers to sign up to work the front admission door (sign up sheet will be at next club meeting)
- ◆ We need donations of rock and other items for silent auction and our door prizes



Case Favors 2009



Critters

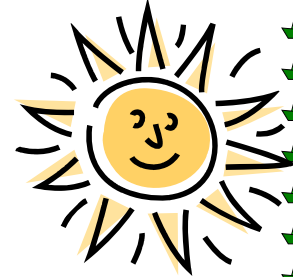


January 2010

SUNSHINE REPORT

Please keep our members in your prayers!

Gene Newnham



JANUARY BIRTHDAYS ~

Glory Reinholt – Sumnar, WA

Robert Massey - Klamath Falls

Steve Kurusz - Klamath Falls

Kristin Sayles — Klamath Falls



Marjorie Riel —
Springfield, OR

*We hope you
have a special
Day!*

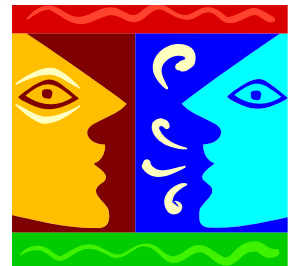
Birthstone The Garnet

- * Comes in every color but blue
- * Can be transparent to opaque
- * Range from 6.5 to 7.5 on the Mohs scale
- * Believed to have healing effects, relieve inflammations of the skin and curing depression
- * Also is for the 6th wedding anniversary



CLUB CHAT

~ CHARITY ~



When trying to come up for a charity to support with the show a discussion came about started by John Long on starting our own charity rather than supporting an outside organization. Some ideas came up with the main one being a group that would be willing to take the black light display and other items around to schools, groups and assisted living homes. The charity table at the show would support this effort in materials and gas. Is this something we would like to do? If so we would need someone to step up to form a committee and members willing to participate. Think about it.

Another charity idea was if our show is profitable above our needed yearly expenses do we want to donate \$25-50 per meeting to a different local charity each month?

We are a non-profit organization do we want to have fund raisers or solicit donations?

Finally the IYS Youth Center will be at the meeting to present information about their needs as a possible charity to support for the 2010 Show.



Spotlight On Our Officers 2010

Vice-President : Marshall Curran

Dusty Rocks is proud to introduce our newly elected vice president, Marshall T. Curran. Marshall, originally from Long Beach, California, came to Klamath Falls when he was transferred by his company. Marshall and his wife Debby have one daughter Darci. Joining RAC in 1990, he was active for many years before the demands of his job limited the time he could spend with the club. Now that he is semi-retired we are benefiting as he once again takes on an active role within the club.

Marshall's Art is the name of his current business where he does lapidary work as long with artwork, sculptures and custom fountains. Marshall has prospected for just about every kind of rock you can think of over his lifetime but if he had to pick one mineral of the over 2000, he would choose fire opal. He also enjoys displaying his collection as well as swapping, selling and giving them as gifts. Besides rocks Marshall's other hobbies are model railroads and slot cars. One of Marshall's goals is to share his knowledge, passion and lapidary skills of gem and minerals with our newer members. Marshall will be working our information table at the 2010 rock show, please stop by and say hi or email him at dcurran_1@charter.net.

Secretary : Jennie Eastburn

Jennie Eastburn is a Klamath native like so many, left to California after graduation, then returned back to her home town. She is married to our new president Jeff and has three children, Brian who is 15, 8 year old Tera and Jayden is 7. Jennie works as an EKG technician, a paraprofessional and of course takes care of the family including Smoochie, Dot, Choo, Choo, Choo, Flareon, Multrace; the Eastburn fish.

Besides rocks Jennie favorite hobby is baking wedding and children's cakes. She enjoys going out and hunting for Obsidian and Sun Stones and likes to display and looking at her finds. About 4 years ago she got dragged into the rock club after attending a boring meeting with her husband. She wasn't sure about joining but she says "Jeff has very good ways of making you join." We are so glad she did as she has been a very important part of the club since. The sad part is she and Jeff are leaving in the fall to warmer climates and Jennie wanted everyone to know she will miss all of the friends she has made over the years in the club.



Late November Garwin had an open shop day and let members come see what projects he has going on in his shop. If you have never been to Garwin's shop it is like Aladdin's cave for rock and gem lovers. You can spend hours just looking at his finds. Don't forget to come to Garwin's in January!



Last Month We Asked for Quartzsite Memories:

Owen Downhill responded:

- ◆ 1995 1st impression, hundreds of snowbirds in trailers and campers for miles
- ◆ Motorized parachute flying overhead with an American flag trailing behind
- ◆ Getting in line at McDonalds with hundreds of others for breakfast
- ◆ The steel fishing rod hanging over a dry gulch just west of the post office, the line was 1/4 steel wire



(Thanks for sharing!!!!)

QUESTION OF THE MONTH:

What is the funniest thing that has happen to you on a rock field trip?



(Email, write or call!)



Let's Go To A Show!

January 2010

1st-10th Quartzsite, AZ
www.tysonwells.com

1-31st Laughlin, NV
www.cloudsjamboree.com

8-10th Del-Mar, CA
www.gemfaire.com

15-17th Santa Rosa, CA
www.gemfaire.com

22nd-24th Hillsboro, OR
www.gemfaire.com



Have some time, check out a few of these rock websites:

www.washingtonjade.com

www.mcrocks.com

www.goldmaps.com

www.lapidary-solutions.com

www.thegemshop.com

www.amlands.org

RAC CALENDAR

JAN 2010

11th - Club Meeting

14th - Show Planning Meeting

16th - Show favors @ Garwin's

FEB 2010

8th - Club Meeting

MAR 2010

6th & 7th - Club Show

APR 2010

10th - Spring Fling (One Day Mini-Show at the Running Y, now in



A special thanks to Doris Newham for your years of leadership, you were a wonderful president!

Thank you to JoDean for serving as treasurer and staying in the position to help train our next one.

Thanks to Chris Chance for coordinating the food for the Christmas party and for representing the RAC at the Museum during their Children's activities day December 29th.

RAC Annual Christmas Lunch

December 13th, the Rock and Arrowhead Club had a record turn out of around 50 including members, families and friends at the museum. The food was delicious, the company wonderful and the games very entertaining. In case you missed it here are some pictures and make plans to join us next December.



One of the dishes provided:

Whip Cream Salad

1 large can of crushed pineapple

1 cup water

3/4 cup water

1 cup sugar

1 large package of large marshmallows

1 package of plain gelatin

1 pint of heavy whipping cream

1 cups of nuts of your choice

Drain pineapple juice and then add enough water to make 2 cups. Bring juice/water and sugar to a boil in large sauce pan. Dissolve 1 package of gelatin in 1 cup of warm water. Add dissolved gelatin to boiling juice. Turn off burner but do not remove pan, add marshmallows, stirring until marshmallow are almost dissolved. Remove from heat and let cool 10-15 minutes. Stir in pineapple and nuts. Let sit overnight in fridge. Mix whipping cream, fold into pineapple mixture, serve.



KLAMATH ROCK AND ARROWHEAD CLUB GEM AND MINERAL SHOW

2010 Show Theme

The Many Surprises of Thunderegg & Geodes

March 6 – 7 2010
Main Exhibit Building
Klamath County Fairgrounds
3531 6th Street
Klamath Falls, Or. 97603

Application for Display Cases:

Name: _____ Phone: _____

Address: _____

Club Affiliation: _____

Type of Display: _____

I will Need a Case: _____ (4'X 2'X 2') Total Amount of Cases Needed: _____
(one 8' case please call to check if available)

I am Bringing My Own Case: _____ Total Amount of Cases: _____ My Case is X X _____
Please call ahead of time if you need special accommodations.

Electricity is limited to 150 watts per case. Exhibitors are to furnish their own Risers & Liners.

Setup time starts Friday March 5th from 10:00 am to 8:00 pm. Displays need to be completed & ready for show to open at 9:00 am Saturday March 6th

Show Hours are Saturday, March 6th 9:00 am to 5:00pm. Sunday, March 7th 10:00 am to 4:00pm.

The Klamath Rock & Arrowhead Club, its officers and appointee will not be responsible for any accident of loss that may occur to any exhibitor, his/her agent, or equipment at the show. Presentation of this **ENTRY** shall be deemed acceptance of this rule.

Exhibitor Signature: _____ Date: _____

Return to: Chuck Newnham
4258 Altamont Dr.
Klamath Falls, Or. 97603

Please return by March 2nd 2009. For more information call Chuck @ 541 892 7486 or Email rockchuck1968@aol.com