

DUSTY ROCKS

FEBRUARY

2010



ROCK AND ARROWHEAD CLUB

P.O. BOX 1803

KLAMATH FALLS, OR 97601

www.klamathrockclub.org

~ DUSTY ROCKS ~

VOLUME 51 ISSUE 2

FEBRUARY 2010 ~ Rock and Arrowhead Club ~ Klamath Falls Oregon

OFFICERS & EXECUTIVE BOARD

President: Jeff Eastburn 541-331-7135
302 W. Main St.
Klamath Falls OR, 97601

Vice Pres: Marshall Curran 541-882-3933
4708 Laverne Ave
Klamath Falls OR, 97603

Secretary: Jennie Eastburn 541-331-7135
302 W. Main St.
Klamath Falls, OR 97601

Treasurer: Shelia James 541-281-9982
17617 Hamaker Lane
Klamath Falls, OR 97601

NFMS Director: Kathi Milem
3333 Anderson #3
Klamath Falls, OR 97603

NFMS Junior Delegate: Alyssa Carnes

Past President: Doris Newham

Member @ Large: Marvin Stump

The club mailing address is:
PO Box 1803, Klamath Falls OR 97601
www.klamathrockclub.org

charlie@klamathrockclub.org

Committee Chairs

↔

Sunshine.....Chris Chance
 Program.....Jeff Eastburn
 Greeter/Door Prize.....Alyssa Carnes
 Refreshment.....Amanda Newnham
 Historian.....Kathi Milem
 Librarian.....Alyssa Carnes
 Claims Rep.....Garwin Carlson
 Field Trips.....Jeff Eastburn
 Show Chair.....Jennifer Zimmerlee
 Asst Show ChairMarvin Stump
 Safety Officer..... Jeff Eastburn
 Publisher/ Webmaster....Charlie Wyckoff

Meetings are held at the Klamath County Museum Meeting Room – Main & Spring Streets, using the *West* entrance. **Meetings are held on the 2nd Monday of each month at 7:00 pm** with the exception of December when we have our Christmas Luncheon and Party.

Visitors are cordially invited:

Dues are \$10.00 per year per adult (\$18 for couples), \$7.50 ages 16-18 and free for juniors ages 15 and under whose parents pay dues.

General Objectives of the Club:

To promote popular interest, knowledge and understanding in the various earth sciences, as in Geology, Mineralogy, Paleontology and Lapidary and other related subjects. To sponsor and provide means of coordinating the work and efforts of all persons interested therein.

Helping Others:

The club participates in the NFMS stamp program, saving large commemoratives, airmail, pre-canceled, foreign and "ordinary" stamps of all values. Proceeds from stamp sales will be used to benefit any charity deemed worthy by the NFMS Endowment Fund.

All contents Copyright © 2009-2010 All rights reserved. No part of this document or the related files may be reproduced or transmitted in any form, by any means without the prior permission of the Rock and Arrowhead Club. Permission is hereby given to non-Commercial and not-for profit groups or persons to copy, forward or otherwise share this publication for educational and informational purposes.

THE NORTHWEST NEWSLETTER is published 11 times a year. Copies are sent to each member's household. The cost is included in your annual dues.

Two free copies of the **AFMS NEWSLETTER** are mailed to each member club. Subscriptions are available at \$3.50 for 9 issues. Send payment to:
American Federation of Mineralogical Societies
PO Box 26523 Oklahoma City, Ok. 73126.

We are affiliated with

- Northwest Federation of Mineralogical Societies
- American Federation of Mineralogical Societies
- Oregon Council of Rock & Mineral Clubs

Newsletter Editor

Jennifer Zimmerlee
541-545-6773
jlazys@hotmail.com

Visit Us At www.klamathrockclub.org

Please e-mail Charlie@klamathrockclub.org to get on our email list.

February 2010

JANUARY 11th, 2010 Meeting Minutes

		Meeting called to order by president Jeff Eastburn
Inside this issue:		The pledge of allegiance was not said no flag. We welcomed members and new guests to our meeting. Jeff and Jennie presented Marvin Stump with a Christmas gift from them. Bob Faraseen, Craig Schoomen were guests
Inside Cover ~ Club	1	
January Minutes	2	
Messages	3	Door Prize – Garwin Carlson congrats
2010 Show	4	Treasurer’s Report – Stand as read.
News & Notes	5	Secretary’s Report – Stand as printed
Getting To Know You	6	Correspondence Mail – No mail to report at this time
Club Chat	7	Sunshine Report –Bob Massey fell and is taking it easy so lets all send our thoughts. We would like all club members to call Heidi Eli if you can to give her some spirits.
Member Musings	8	\$25.00 to Heidi Eli for the death of her husband.
Case Application	9	
		Gene Newnham really needs some good thoughts from the club now so please call him too. Frank Vaughan to get a card to as well for back surgery.

NEXT MEETING:

- February 8th
- Refreshments:

Happy Valentines Day!



Old Business – Stamp program is done by Kathi when she goes to the federation. For a scholarship program. When people give stamps as a donation to the federation we need to put a thank you in the newsletter for their donations.

IYS Youth center came with two gentleman to explain to our club about how they take care of almost 80 children every day and they supply a safe environment to these children after school from about 2:45pm to about 5:30pm so that they can be feed by USDA programs and keep them safe. Club made a motion to have the IYS youth center to be our charity in March 2010.

New Business – If you have any case stuff you need to show please fill out the application and give to Chuck or Charlie or Jennifer Zimmerlee before the show. We need to make critters at the Stumps home on January 22 and 23 from 9am to 8pm or around that time please call Marvin and Leah Stump for more info. 1241 Lakeshore drive is where the Stumps live. Sat 2108 Carlson drive is where you will find Garwin Carlson and will make case favors at 1pm so please call Garwin if you need more info about this. We have talked about getting a trailer to keep all our show stuff in so we need to be thinking about it. We recruited Sheila James to be our new Treasurer we motioned it as a club and the club seconded it. Affective today through till Dec 31st. of this year. Ok we are getting a black light book for our club to go with the black light.

Gave Marvin Stump his Christmas gift of a stocking full of coal everyone laughed it was great. Thanks Marvin for being a great guy and a good sport.

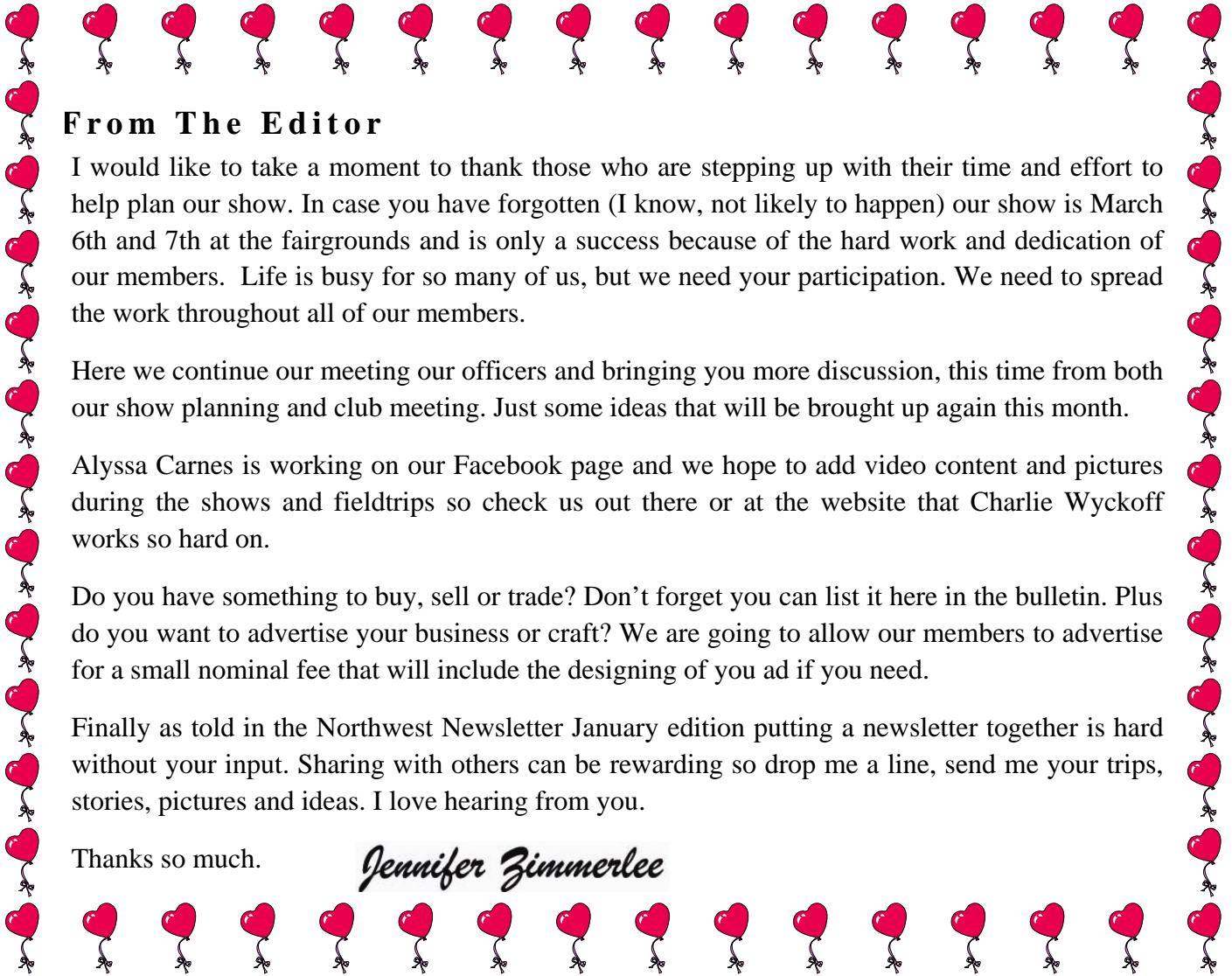


Field trips – Chuck said there is no snow up where his claim is. Garwin Carlson is going to Arizona show and he said it is bigger than you can ever imagine. Buda Cortez is a gold nugget that is 15lbs it was cool and big.

This Thursday at IYS on main st. at 6pm.

Refreshments are by the Eastburns and Kathi Milem

There was no program for the night.



From The Editor

I would like to take a moment to thank those who are stepping up with their time and effort to help plan our show. In case you have forgotten (I know, not likely to happen) our show is March 6th and 7th at the fairgrounds and is only a success because of the hard work and dedication of our members. Life is busy for so many of us, but we need your participation. We need to spread the work throughout all of our members.

Here we continue our meeting our officers and bringing you more discussion, this time from both our show planning and club meeting. Just some ideas that will be brought up again this month.

Alyssa Carnes is working on our Facebook page and we hope to add video content and pictures during the shows and fieldtrips so check us out there or at the website that Charlie Wyckoff works so hard on.

Do you have something to buy, sell or trade? Don't forget you can list it here in the bulletin. Plus do you want to advertise your business or craft? We are going to allow our members to advertise for a small nominal fee that will include the designing of you ad if you need.

Finally as told in the Northwest Newsletter January edition putting a newsletter together is hard without your input. Sharing with others can be rewarding so drop me a line, send me your trips, stories, pictures and ideas. I love hearing from you.

Thanks so much.

Jennifer Zimmerlee

February Birthdays!

Hope you have a special day!

Arnold Richard – Murphy, OR

Lauralie Barrett – K Falls, OR

Garwin Carlson – K Falls, OR

Kristen Dawes – K Falls, OR

Lily Kurusz – K Falls, OR

Patrick Overton – Macdoel, CA

Holly Zumbrun – K Falls, OR



The Amethyst is the birthstone for February

- * A form of quartz from lavender to the most valuable a deep dark purple
- * At eleven feet tall ,The Empress of Uruguay, is the World's biggest Amethyst Geode in Atherton Tablelands, Australia
- * The name comes from a Greek word "amethystos" for not drunk
- * Is said to protect its wearer





February 2010

RAC SPRING CALENDAR



- February 8th The Next Club Meeting 7pm - Klamath County Museum
- February 11th Show Planning Meeting 6pm - IYS Building
- February 25th Show Planning Meeting 6pm - IYS Building
- March 5th Show Set up & Spaghetti Dinner - Klamath County Fairgrounds
- March 6th Show 9:00am - 5:00pm - Klamath County Fairgrounds
- March 7th Show 10am - 4pm, Old-Timers Breakfast and take down - Klamath County Fairgrounds
- March 8th Club Meeting 7pm - Klamath County Museum with a special program
- April 10th The Spring Show - At the Running Y (now in planning stage)



IT IS SHOW TIME!



Don't Forget We Need:

Donations of rocks for our Silent Auction

Donations for our Raffle Drawings (or do you know a business who will donate a item for our raffle?)

Items for our Craft Table to Support our Charity

Your application to put in a case display (attached)

Working the Front Door:

Helping with Charity Table or Raffle Table

Saturday March 6th:

- 9-11am Don Perryman
- 11am-1pm Marv Stump
- Chris Chance
- 1-3pm Kermit Warner
- Cindy Howland
- 3-5pm Jennifer Zimmerlee
- Leah Stump

Sunday March 7th:

- 10am-12pm Don Perryman
- Chris Chance
- 12-2pm Marv Stump
- Cindy Howland
- 2-4pm Kermit Warner
- Leah Stump

- Leah Stump Sheila James
- Chris Chance Jodean Cogdill
- Jennifer Zimmerlee

Is your name missing from this list? Don't worry we still need your help!

Don't be shy, come out and have fun with us at the show!



February 2010

IN MEMORIAM

Robert Eli

Please keep Heidi Eli in your thoughts and prayers at this difficult time.



SUNSHINE REPORT

Please keep our members in your prayers!

Gene Newnham Frank Vaughn

Bob Massey



Last Month We Asked for Funniest Memories:

Kathi shared:

At the AFMS field trip in MT last year watching the caravan of cars, trucks and us with our trailer trying to follow the locals flying 70mph down dirt roads in a line of dust and rattling bumps makes for a great laugh.

Another member shared:

Trying to follow Chuck on our filed trips and you have no idea where to go when you come to a fork in the road except for the dust cloud. Just following the dust cloud is easier on the car then trying to keep up with Chuck.



QUESTION OF THE MONTH:

What is your best find, the one you still can't believe you came across, on a rock field trip?

(Email, write or call!)



Let's Do A Show

Feb 12-14th Oregon Agate & Mineral Society, Portland OR

Feb 13-14th Whidbey Island Gem Club, Oak Harbor WA

Feb 27-28th Idaho Gem Club, Boise ID

Feb 27-28th Owyhee Gem & Mineral Club, Caldwell ID

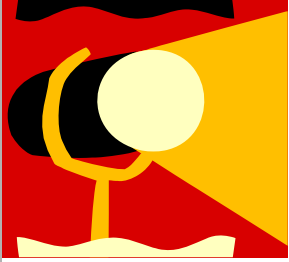
Feb 27-28th Everett Rock & Gem Club, Everett WA

Feb 29th Rings & Things Bead Tour, Spokane WA

NFMS Stamp Program

Do you know about the stamp program? RAC participates in the Northwest Federation stamp collecting. Save any type of cancelled (mailed) stamp. Tear the stamp off of your envelopes leaving at least a 1/2 inch border and bring them to a meeting or mail them in and Kathi will take them or forward them to the NFMS stamp chair Hermina Kol-ski. NFMS sells them and the proceeds go to any charity deemed worthy of the NFMS Endowment fund. This year the donations are going to Cancer Research. So please take a moment and save your stamps!





Spotlight On Our Officers 2010

Part II

President : Jeff Eastburn

If you haven't had the pleasure of meeting our new President Jeff (last year our VP), then you are missing the chance of learning something new. Jeff offers a vast array of knowledge, not just of rocks, gems & minerals but of life. Married to Jennie as you met last month, they live a very busy life with their children and fish. Jeff was born in Hoopa California but moved with his family, when he was six, to Klamath Falls when his father took a job with Weyerhaeuser. For the past fifteen years Jeff has worked at Kinglsey Field as an Avionics Technician. Jeff caught the rock bug while watching the Travel Channel show Cash & Treasures. When the show recommended finding a local group to learn more, Jeff joined RAC and boy are we glad he did.

Jeff and Jennie have collected a lot of petrified wood, obsidian and agate, but haven't had the time to do much more than slab a few pieces and put them on every surface that will bear the weight of rocks. Jeff is also building a collection of faceted gemstones to be sold locally on commission or hosted on the internet, although they may be selling some of their collection to lighten the load, especially with the move to Australia coming up. Inspired by his friend and mentor John Bailey, Jeff has come up with a name for his website but is still working towards adding content. Besides rocks Jeff also enjoys woodworking, computer programming and faceting. So what is Jeff's favorite material, in his own words "Cubic Zirconia! Yes, I know it has the stigma of being "fake", but I love what I can make it do! I think people are missing something very cool about CZ. NATURE CANT MAKE IT ! At least not what we now enjoy. Nature can make diamonds under great pressure deep in the mantle, but not CZ. Nature can make natural Zircon Crystals (not the same as CZ) which can be literally BILLIONS of years old, but not CZ. There is an extremely rare form of mineral zirconium oxide, but the crystalline CZ is the result of human ingenuity developed in the 30's! Only 80 years old! Ancient kings and emperors amassed treasures that contained almost every beautiful thing which could be found. None of them had CZ! Men sullied it's reputation by passing it off as diamond, because it looks like diamond, or even when being honest,, the affordability made is seem cheap and valueless.. Natural stones are money makers, but CZ is just so much fun !" Jeff will be the MC at the show so make sure to say hi or feel free to send him an email at justturn@charter.net.

Treasurer (outgoing): Jodean Cogdill

Joining the RAC in 2008 Jodean Cogdill has since served as Treasurer, a great fit as she works as an Accounts Payable clerk at Jeld-Wen. Living in Klamath Falls since she was six; she and her husband of 39 years Bill, joined the club after hearing about it for years. They have three grown children Krista, Anna and Joseph but still have plenty of fur kids to keep them busy. Nugget and Winnie Poo are the dachshunds with Amber, Buster Brown, Minnie Mouse, Max, Sadie and Tegan are pit bulls. Yes that is eight dogs, but not be left out are the six fish.

Jodean and Bill enjoy hunting for agates on the beach and digging for thunder eggs, then just enjoy looking at their finds. Besides rocks Jodean enjoys different types of puzzles. If you haven't met Jodean she will be working the Raffle Prize table at the show. She is also taking the time to train Sheila as she becomes the new Treasurer.

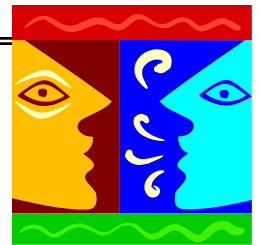


Treasurer: Sheila James

Sheila James grew up on the Yakima Valley area of Washington. She and her husband, of 22 years, Charlie was living in the Bay Area when they decided they needed a change for themselves and their two children Natasha and Autumn. They had dreams of living in the mountains, owning horses, being in a close-knit community with smaller schools so they choose to move to Keno. There they share their life with the horses; Sierra a quarter/paint cross, Hero a quarter horse and Ladybug the appaloosa as well as Rose the stray cat and whole flock of pet chickens that Autumn takes care of and has named. Sheila is field service representative for a company called Mosaic and holds a degree in Travel Marketing and Business Office Administration.

Sheila became a member when Jeff talked them into it after Charlie and Jeff were at a guard drill weekend; he helped convince them it would be fun for them as a family. New to rocks, this past summer were their first field trips to sunstones and obsidian. They had a great time and were grateful for Garwin showing them how to find the treasures and Jeff's advice to bring extra tires because they did have a flat when they parked to camp. Besides rocks Sheila also enjoys quilting and machine embroiders clothing. She also enjoys camping and trail riding with her family, fishing, swimming and rock hounding as well as tending her garden and flowers. Sheila would like to say thank you for the opportunity to be the new treasurer and feel free to say hi at the raffle table during the show or email her at cjsjames@msn.com.

CLUB CHAT ~ CHARITY, PARTICIPATION, SHOW ~



The idea of donating to a charity monthly if the show is profitable was well received and Jeff will be working on implementing a charity chair to research and nominate a charity each month and the charity for the show.

The IYS Youth Center was chosen as the charity of choice for the show. Please donate your craft table items to raise funds for them and read more about them in next month's newsletter.

There is still some discussion of getting a group together to go to school and other places but it takes your support, time and effort.

Another discussion was on participation, it seems a few do a majority of the work, but it would be easier if more helped out to spread out the work, can you help? It only takes a little time.

A couple of suggestions from last years show will come up at February's meeting. Do we want to spend money on new lights and shades to standardize all the lights on the display cases? Do we want to buy the same type of containers for the raffle prizes and should they be clear for people to see how many tickets are inside. Besides numbers on the raffle containers it was suggested we use pictures so there is no confusion on which prize your are trying for. We need something to protect our table to eliminate touching and petty theft, perhaps a small fence?

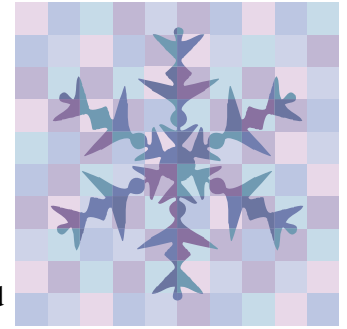
Finally Leah and Marvin keep most of the show supplies at their house but they also get spread out among other members. Do we want to buy a trailer to store all of the club's supplies? If so what type of trailer, how do we license and insure it and then who stores the trailers.

These are just a few things that are still being discussed, please give your input either at the meetings or call any of us.



Member Musings

Rock hunting in the snow... By Linda & Robert Gresham



Well, sort of... since it's been way too icky outside to go rock hunting around our area, we've managed to amuse ourselves with the rocks we have already found.

Cleaning the garage, we found a bucket of obsidian that had been hiding. It's gold sheen and rainbow. Made us stop and remember where and when we had acquired that stash. Then we came across a pile of obsidian needles, remembering how hot it was when we were digging for them.

And, we found another bucket of sunstones that we thought had been lost in the many moves. Need to get to polishing and tumbling!

And then... we received the notice from Chuck regarding having a display case at the upcoming Rock Show. So, Linda dug out her many geodes and thundereggs that she has been collecting from the rock shows and the newest one that she got from the Rock Club Christmas Dinner Gift Exchange. Now the planning of the case has commenced. It seems sort of odd to be washing and dusting rocks, but each must be sparkly for the case.

Speaking of the upcoming rock show, Linda was able to get to Leah's place to help make critters for the upcoming show. It was great fun to sit and play and create, although many many more critters need to be made. Hopefully Leah will have another play day soon.

The only other thing these two old rockhounds have been able to do so far this winter is to work on our jewelry. Robert has been wirewrapping some cool new rocks, from Labradorite to cameos. Linda has almost finished her chain maille tunic that she's going to make Robert wear at the show. See you all next meeting!



Working at Garwin's on Case Favors



KLAMATH ROCK AND ARROWHEAD CLUB GEM AND MINERAL SHOW

2010 Show Theme

The Many Surprises of Thunderegg & Geodes

March 6 – 7 2010
Main Exhibit Building
Klamath County Fairgrounds
3531 6th Street
Klamath Falls, Or. 97603

Application for Display Cases:

Name: _____ Phone: _____

Address: _____

Club Affiliation: _____

Type of Display: _____

I will Need a Case: _____ (4'X 2'X 2') Total Amount of Cases Needed: _____
(one 8' case please call to check if available)

I am Bringing My Own Case: _____ Total Amount of Cases: _____ My Case is X X _____
Please call ahead of time if you need special accommodations.

Electricity is limited to 150 watts per case. Exhibitors are to furnish their own Risers & Liners.

Setup time starts Friday March 5th from 10:00 am to 8:00 pm. Displays need to be completed & ready for show to open at 9:00 am Saturday March 6th

Show Hours are Saturday, March 6th 9:00 am to 5:00pm. Sunday, March 7th 10:00 am to 4:00pm.

The Klamath Rock & Arrowhead Club, its officers and appointee will not be responsible for any accident of loss that may occur to any exhibitor, his/her agent, or equipment at the show. Presentation of this **ENTRY** shall be deemed acceptance of this rule.

Exhibitor Signature: _____ Date: _____

Return to: Chuck Newnham
4258 Altamont Dr.
Klamath Falls, Or. 97603

Please return by March 2nd 2009. For more information call Chuck @ 541 892 7486 or Email rockchuck1968@aol.com