

DUSTY ROCKS

**MAY
2010**



ROCK AND ARROWHEAD CLUB

P.O. BOX 1803

KLAMATH FALLS, OR 97601

www.klamathrockclub.org

~ DUSTY ROCKS ~

VOLUME 51 ISSUE 5

MAY 2010 ~ Rock and Arrowhead Club ~ Klamath Falls Oregon

OFFICERS & EXECUTIVE BOARD

President: Jeff Eastburn 541-331-7135
302 W. Main St.
Klamath Falls OR, 97601

Vice Pres: Marshall Curran 541-882-3933
4708 Laverne Ave
Klamath Falls OR, 97603

Secretary: Jennie Eastburn 541-331-7135
302 W. Main St.
Klamath Falls, OR 97601

Treasurer: Shelia James 541-281-9982
17617 Hamaker Lane
Klamath Falls, OR 97601

NFMS Director: Kathi Milem
3333 Anderson #3
Klamath Falls, OR 97603

NFMS Junior Delegate: Alyssa Carnes

Past President: Doris Newnham

Member @ Large: Marvin Stump

The club mailing address is:
PO Box 1803, Klamath Falls OR 97601
www.klamathrockclub.org

charlie@klamathrockclub.org

Committee Chairs

↔

Sunshine.....Chris Chance
Program.....Jeff Eastburn
Greeter/Door Prize.....Holly Zumburn
Refreshment.....Amanda Newnham
Historian.....Heidi Eli
Librarian.....Alyssa Carnes
CharityJohn Long
Claims Rep.....Garwin Carlson
Field Trips.....Marshall Curran
Black Light DisplayChuck Newnham
Show Chair.....Jennifer Zimmerlee
Asst Show ChairMarvin Stump
Safety Officer.....Jeff Eastburn
Publisher/ Webmaster.....Charlie Wyckoff

Meetings are held at the Klamath County Museum Meeting Room – Main & Spring Streets, using the *West* entrance. **Meetings are held on the 2nd Monday of each month at 7:00 pm** with the exception of December when we have our Christmas Luncheon and Party.

Visitors are cordially invited:

Dues are \$10.00 per year per adult (\$18 for couples), \$7.50 ages 16-18 and free for juniors ages 15 and under whose parents pay dues.

General Objectives of the Club:

To promote popular interest, knowledge and understanding in the various earth sciences, as in Geology, Mineralogy, Paleontology and Lapidary and other related subjects. To sponsor and provide means of coordinating the work and efforts of all persons interested therein.

Helping Others:

The club participates in the NFMS stamp program, saving large commemoratives, airmail, pre-canceled, foreign and "ordinary" stamps of all values. Proceeds from stamp sales will be used to benefit any charity deemed worthy by the NFMS Endowment Fund.

All contents Copyright © 2009-2010 All rights reserved. No part of this document or the related files may be reproduced or transmitted in any form, by any means without the prior permission of the Rock and Arrowhead Club. Permission is hereby given to non-Commercial and not-for profit groups or persons to copy, forward or otherwise share this publication for educational and informational purposes.

THE NORTHWEST NEWSLETTER is published 11 times a year. Copies are sent to each member's household. The cost is included in your annual dues.

Two free copies of the **AFMS NEWSLETTER** are mailed to each member club. Subscriptions are available at \$3.50 for 9 issues. Send payment to:
American Federation of Mineralogical Societies
PO Box 26523 Oklahoma City, Ok. 73126.

We are affiliated with

- Northwest Federation of Mineralogical Societies
- American Federation of Mineralogical Societies
- Oregon Council of Rock & Mineral Clubs

Newsletter Editor

Jennifer Zimmerlee
541-545-6773
jlazys@hotmail.com

Visit Us At www.klamathrockclub.org

Please e-mail Charlie@klamathrockclub.org to get on our email list.

April 12th, 2010 Meeting Minutes by Linda Watson

May 2010

Inside this issue:

- Inside Cover ~ Club **1**
- April Minutes **2**
- Birthdays **3**
- News & Notes **4**
- Field Trip, Club Chat **5**
- Shows & Sale **6**
- Bonseki **7**
- Running Y Show **8**
- Hampton Butte Map **9**

7:00 PM: Meeting called to order by Vice-President, Marshall Curran. Pledge of Allegiance

Read Thank you letter from IYS (RAC had sent them a check for \$525 – proceeds from the 2010 Rock Show charity table). Report given by Scott Langford & Craig Shimmy: Thank you for the money, but especially thank you for spending time with the kids. Money will be used for painting project. RAC was presented a plaque and card made by the kids.

Guests introduced themselves – Betty & John Brunswick and Della and Duane Fitzsimmons. No Birthday contributions Door prize winner – Fairisine Fore.

Minutes from last meeting: Jennifer Zimmerlee moved that the minutes be accepted as written and Chuck Newnham seconded it. Membership approved the motion and minutes were accepted as written.

Treasurer’s Report: \$7573.18 currently in the bank after payment of some bills from the rock show (advertising). Garwin Carlson moved that bills were accepted and paid. Don Perryman seconded the motion. Motion passed.

John Long, Chair for Charities reported that the top 4 charities from the polling were: 1.Kleos 2.Klamath Lake Youth 3. Campfire 4. Exodus House. Hope Community Center and the Humane Society were added to the charity list for future donations. Garwin Carlson made a motion to accept the top 4 charities and contribute \$25 to Kleos for April. The remaining 3 charities will receive a contribution of \$25 each for the next 3 months (#2 will receive \$25 in May, #3 will receive \$25 in June and #4 will receive \$25 in July). Jennifer Zimmerlee seconded the motion. Motion passed.

Correspondence read. Sunshine report: Chris Chance reported that she hadn’t heard of anybody being sick. Doris Newnham gave an update on Gene Newnham – doing better now.

Librarian’s Report: WHO HAS THE BLACK LIGHT???????

Historian’s Report: nothing new. Jennifer requested photos from anyone who took pictures at the show to share those with the club.

NWF Report: Nothing new. Suggested checking out their website.

Old Business: Oregon Council – Jennifer will report next meeting.

Spring Running Y Show – started out slow, but ended up nice. All want to do it again next year. Suggested add the information to our advertising with our main show and have handouts at the main show. Had 12 vendors participate.

Had different members compliment Jennifer on the newsletter. Charlie, Doreen and Jennifer are doing a wonderful job with the newsletter – the members are liking the content and how easy it is to read now.

New Business: Program tonight – Silent Auction – money will go to Christmas Party. Jennifer has decided on dates for her Grandfather’s Estate Auction – May 21-22-23, with Friday being for club members only. She’ll post more in next newsletter.

Blue Willow has an 8x8 covered trailer – 16’ tandem axle for \$3000. Chuck Newnham will get photos of it and do inspection of it. Marshall Curran will check into licensing and titling. Dr Kochevar made a motion to have Chuck Newnham as Chair of the Trailer committee and Garwin seconded it. Motion passed. Chuck will present the info at the next meeting and it will be decided then if the club will purchase it or not.

Field Trips: Chuck Newnham: made another trip over by Ashland and found nice colorful agates and calcite casts with drusy. Hampton Butte trip – Salem club is coming, too. Proposed Field Trips – see last newsletter. Jennifer will do sign-up sheets for next meeting (as proposed by Don Perryman), so members can commit to trips. Once this is accomplished, then planning can go on for these trips. Addition to list – Dent Creek area – a day trip hosted by John Wood.

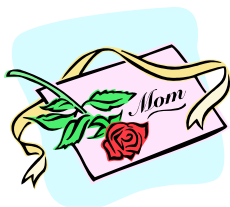
Refreshments provided by the Longs and the Carlsons. Meeting was adjourned at 7:50 pm.

NEXT MEETING:

- May 10th
 - Refreshments:
- Jennifer Zimmerlee

* Program:
Maps by Charlie Wyckoff

Happy Mother's Day!





From The Editor

Marshall & Linda did a great job filling in at the last meeting, it is nice when as a group we step up and get the job done! We all have such busy lives, but we can still each do our part. We know you can't always make it to the meetings, school, work, money, location can all be a factor; but as I've said before you are an important part of this club and we are using this newsletter as a tool to keep you informed. Please do not hesitate to speak up via phone, email or in person if you have a question, comment, objection or something to share. We are always happy to hear from you! Please take the time to read the newsletter and see if you need to give input on anything, like the trailer, mentioned in the Club Chat.

If life is busy take time for some fun, for Rockhounds, fun comes in by going on field trips and gathering the rock we love! Listed last month were several proposed field trips, at the next meeting we will have sign up sheets for those field trips, this way we are coordinating schedules with the ones that are truly interested. Can't come to a meeting but one of those field trips looked like fun? Well don't hesitate to get in touch with Marshall and let him know. We can't wait to see you at Hampton Butte or one of our other field trips. Don't forget if you do go on a rock related trip, write a short article and I would be happy to include it in the newsletter! I'm also looking for someone to take pictures and write an article about the Hampton Butte field trip as my life is interfering and I won't be able to go that weekend. Thanks everyone and happy hunting!

Jennifer Zimmerlee



HAPPY BIRTHDAY!

May Birth Stone—The Emerald



Leroy Bieler – Klamath Falls

- * The only stone besides Topaz listed in all the ancient birthstone tables

Tammy Gerhardt – Bend, OR

- * Is a variety of beryl and ranges 7.5 - 8 on the Mohs Scale.

Lorraine Kochevar – Klamath Falls

- * Emeralds usually contain many cracks and fissures so they are immersed in oil to reduce the visibility of the inclusions.

Jessica Limb – Klamath Falls

- * Cleopatra prized emeralds above all other gems

Janis Smith – Prineville

FYI.....

Jirehka Smith – Klamath Falls

Michael Zumbrun – Klamath Falls

The Birthday contribution is, that in the month of your birthday at the meeting (or feel free to mail it in), we ask that you donate a dollar (or you can donate more) to the club for our Christmas Luncheon. This money goes to the purchase of the turkey and ham that we serve each year. We thank you for your participation!

Name Tags?

Did you order a name tag? Chuck has them, try to pick them up at the meeting, price is \$8. He has them for Sheila James, The Overton Family & Doreen Chase. Want a name tag? Let Chuck know.



May 2010

QUESTION OF THE MONTH:

What is your dream rock trip if money was no object! (Email, write or call!)

Last Month We Asked Other Great Shows!

Besides our show the resounding winner was Roseburg as a great show, but also mentioned was Lakeview, Medford, Grants Pass and Reno.



FOR SALE

Enameling Kiln....Best for firing art glass, PMC and enameling. Fuze glass, cure paint on china and dichroic glass.....virtually unused....inside dimensions: 8" tall, 5 3/4 wide by 7 3/4 deep....max temp 2000f with electronic programmable control.....\$550. Contact Patty Bennett @ 541-883-8413

A FIELD TRIP © Dick Stata 2002

Five A.M. I struggle to arise from my bed; I stagger to the bathroom feeling half dead. Saturday morning, I should have slept in; But it's time for that field trip, I guess I can't win. I load up my stomach and load up the car. I hope that this quarry isn't to far. It's raining and cold it's damp and it's foggy; It's sure hard driving when your feeling this groggy. I' ve driven for miles, I really need a break: But I can't stop now, I might get there to late. I got there on time, but no one else there; It's almost enough to make you pullout your hair . I sat and I waited; it's now almost noon; Then I looked at my schedule, Damn! I'm a week to soon.

Dates to Remember



- May 28th - 31st Hampton Butte Field Trip
- May 10th Club Meeting
- June 14th Club Meeting
- June 26th -27th Sunstone Field Trip
- July 12th Club Meeting
- July 17th -18th Lassen Creek Field Trip

Road Trip Time!

- May 8-9 Bozeman Gem Club - Bozeman, MT
- May 8-9 Reno Mineral Club - Reno, NV
- May 14-16 Superior CA Gem Assoc, Anderson, CA
- May 15-16 Hatrockhounds Gem Society, Her miston, OR
- June 4-6 Puyallup Valle Gem Club, Puyallup, WA
- June 5-6 North Idaho Mineral Club, Coeur d'Alene, ID



Do you have our black light? Or do you know who has it? Please let us know! Thanks!

May 2010

HAMPTON BUTTE PETRIFIED WOOD FIELD TRIP

MEMORIAL DAY WEEKEND MAY 29, 30, 31, 2010



Here are the directions to the camping area at Hampton Butte.

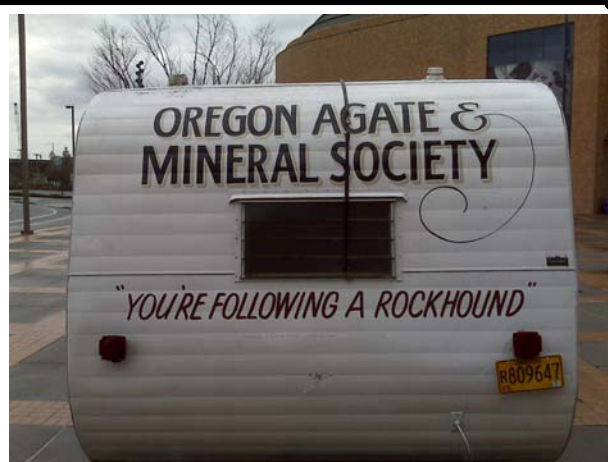
Go east from Bend on Highway 20 towards Burns. Just past Milepost 52, turn north (left if you are traveling east on Hwy 20) on Van Lake Road, a nice graveled road. Then travel approximately 10.4 miles to SE Price Road, a nice wide improved dirt road heading east (if it has been raining hard, this section of road may not be so nice). SE Price Road runs straight and flat for about 2 miles, then drops down into a drainage and then up again.

The camping area(s) are to the left (north) of the road, approximately 1/8 mile past the drainage. The camping area is unimproved and located in an old-growth juniper forest. This is also a collecting area on both sides of the road.

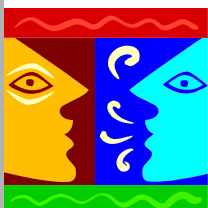
A map of the Hampton Butte area is included in this Bulletin.



Eat, Sleep, Rockhound!



As seen at OMSI



CLUB CHAT ~

STORAGE TRAILER ~

As listed in the minutes, Blue Willow has an 8 x 8 16' tandem axle covered trailer for \$3000. Chuck is going to inspect the trailer and let us know if it is a good value and will be the Chair of the Trailer Committee. Marshall is checking into the license, title and insurance aspect. Based on these factors the club will need to decide at the next meeting to buy a trailer (either this one or another). This trailer will be used to store our show supplies therefore freeing up Marvin's basement. If we can work out the logistics of insurance, title and storage, do you think we should buy a trailer? It is a large commitment, do we have any other ideas out there?

LOCAL SHOWS 2010

Grants Pass Show

Garwin attended the Grants Pass show and displayed his case. He reported that the three day show was a success with Friday for the local school kids and excellent turn out on Saturday, like us though, Sunday was down in attendance. They had nice exhibits and good dealers.

Medford Show

Garwin demonstrated his silversmithing at the Medford show as well as putting in a case. Several of our members performed demonstrations at the show although we had less participants than last year. Overall Roxy Ann Club put on another great show!



LARGE ESTATE SALE!

50 Years worth of Lapidary Material and Tools!

Rocks, Rocks & More Rocks! Obsidian, Agate, Opal, Jasper, Thundereggs, Saws, Tumblers, Polishers, Sphere Machine, Camping Gear, Tools, Antiques & More!

Where: 10584 E Langell Valley Rd
Bonanza, OR 97623
541-545-6773
jlazys@hotmail.com

When: Open to the Public
Saturday May 22nd 7:30am to 6pm
Sunday May 23rd 9:00am to 5pm

*(For Roxy Ann, Rogue Gem & Rock and Arrowhead club Members only, special hours **Friday May 21st from Noon till 7pm**)*

Directions: Take SR 140/Lake of the Woods to Klamath Falls, follow SR140 towards Lakeview.

At Dairy bear right onto SR70 towards Bonanza, go straight through Bonanza onto E Langell Valley Rd (Big Springs Park will be on your right), for 13 miles, (like you are going towards Gerber Reservoir but continue around the corner, past Gerber Road the turn off to the Reservoir) we are the next Blue House, on a sharp left hand corner. Balloons on the Mailbox, plenty of parking.

BONSEKI

One of our newest members Herb Bastuscheck was kind enough to come to our show and the March meeting to demonstrate the lost art of Japanese Bonseki. *Bon* means tray and *Seki* means Rocks so Bonseki means Tray with Rocks, you may be more familiar with Bonsai or Tray Planting (*Sai* means planting). Bonseki, a lost Samurai Art is similar to the tea ceremony where meditation accompanies a learned pattern of actions, was developed at the Ryuanji Temple in Kyoto. The art form is now mainly performed by women and is endangered by the fact that unlike other art forms is not taught in schools.



Herb went to Japan to teach English and stayed for 23 years, down from where he lived was an art shop and there he met his sensei, Masa Saito, who was designated as “Living National Treasure” in Japan. He had 16 years of lessons with her and is the only non-Japanese Bonseki master. His greatest memory is going to the Ryuanji Temple and creating the scene in front of him with a master showing him techniques, where Bonseki was started. Herb has been to 24 countries but still misses good ramen and the people of Japan.

Learned in increments by mastering individual features before combining them, Bonseki is a Journey, and follows some ceremony, created by gypsum, feathers, spoons and sieves each step furthers the depth of the scene being created. At the meeting Herb created a beautiful waterfall, starting with water base of sand then laid out big rocks that built the 9 layers of gypsum followed by the moon element, the mountain then the clouds. The Gypsum is screened from large chunks down to fine powder that looks like powder sugar. After creating the tray art the finished bonseki trays were placed in the little alcoves below the hanging scrolls in family tea ceremony rooms, or are wiped away and started all over again. Some choose to mix powder glue with the gypsum and set it by using a tea kettle with a rubber hose to create just the right amount of steam to set the glue, and others use water color pigment to add color to a permanent scene. The final scenes

whether they be permanent or temporary are breathtaking in the simple beauty they portray.





The Spring Artisan Sale @ The Running Y

Small, intimate with beautiful items being offered, the Running Y show is starting a new tradition of talented artists merging with our love of rock, be sure to check it out next year.

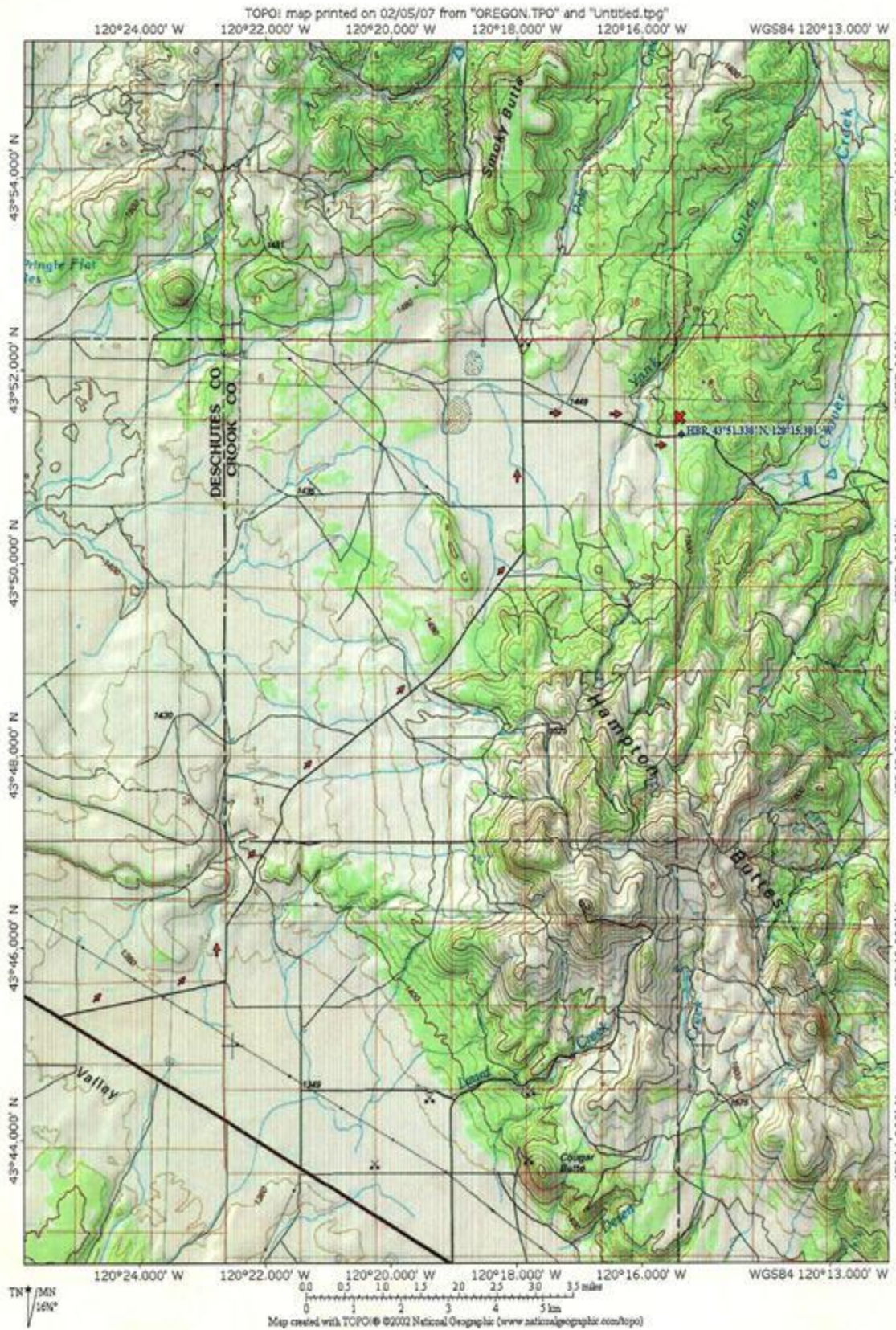
Happy Memorial Day



Thank You To Our Troops!



Klamath Rock And Arrowhead Club



Hampton Butte Petrified Wood

From Bend go east on highway 20 about 50 miles past Brothers.

Bear left (east) onto Van Lake Rd (about 2.2 miles)

Turn north on Van Lake Rd. and go another 8.8 miles.

Turn east on Pricetwelve Rd. Go east about 2.2 miles to the collection site and park.

Material can be found on both sides of the road for about a half a mile.



Rock hounding in Central Oregon

TOPO! map printed on 02/05/07 from "OREGON.TPO" and "Untitled.tpg"

